

Meeting, Conference Business & Office Spaces

Just the way you want them!



 **Kegworth Hotel**
& Conference Centre

 **Queensgate Hotel**
& Conference Centre

Personal, flexible, profession

Extensive meetings and business space in a central location

Kegworth Hotel and Conference Centre offers flexible and extensive meeting and conference spaces (2 to 250 people), ample breakout rooms (up to 10), and meeting lounges (up to 4), complemented by a fully specified business centre that offers short and long term office and desk space.

All at a central, easily accessed location with ample parking space – and at superb value.

If you are looking for conferencing/meetings space for an exhibition, a product launch, board meetings, work meetings, training, examination rooms, desk spaces or an informal business coffee lounge, start with Kegworth Hotel & Conference Centre in your shortlist.

Your Meeting

Your Way!

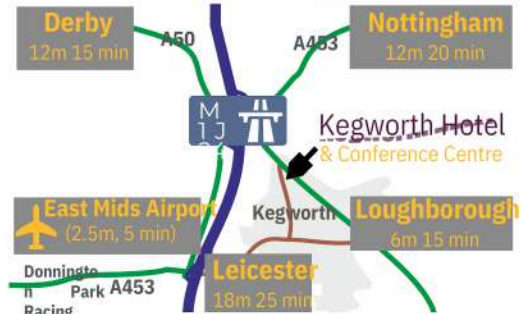
At the Kegworth Hotel & Conference Centre, we see meetings in the context of people's communication needs and how they relate to the objectives the organiser sets for the meeting.

That's why our meeting rooms are furnished with up to date communication tools, plus have built in flexibility to change to suit your agenda.

This is complemented by our approach aimed at easing your organisational burden. That way, you have the opportunity to maintain focus on what is important for you, your audience and your organisation and have productive and satisfying meetings.

Professional, flexible and personal
We'll dedicate our facilities and service to you to achieve a successful meeting.

Kegworth Hotel Conferencing - at a glance



In the heart of England, Junction 24 M1, close to mainline train station, international airport, Nottingham, Loughborough, Derby and Leicester

We have delivered thousands of meetings and conferences to the complete satisfaction of our patrons - we guarantee that for your meeting too!

Extensive facilities

Central location

Prestige venue

Great service

Business lounge

Breakout rooms

Business centre

Food variety and great quality

Spacious hotel rooms with workstations

All the extras

free wifi, free parking, PA services, equipment extras, props and organiser helpline

At a glance...

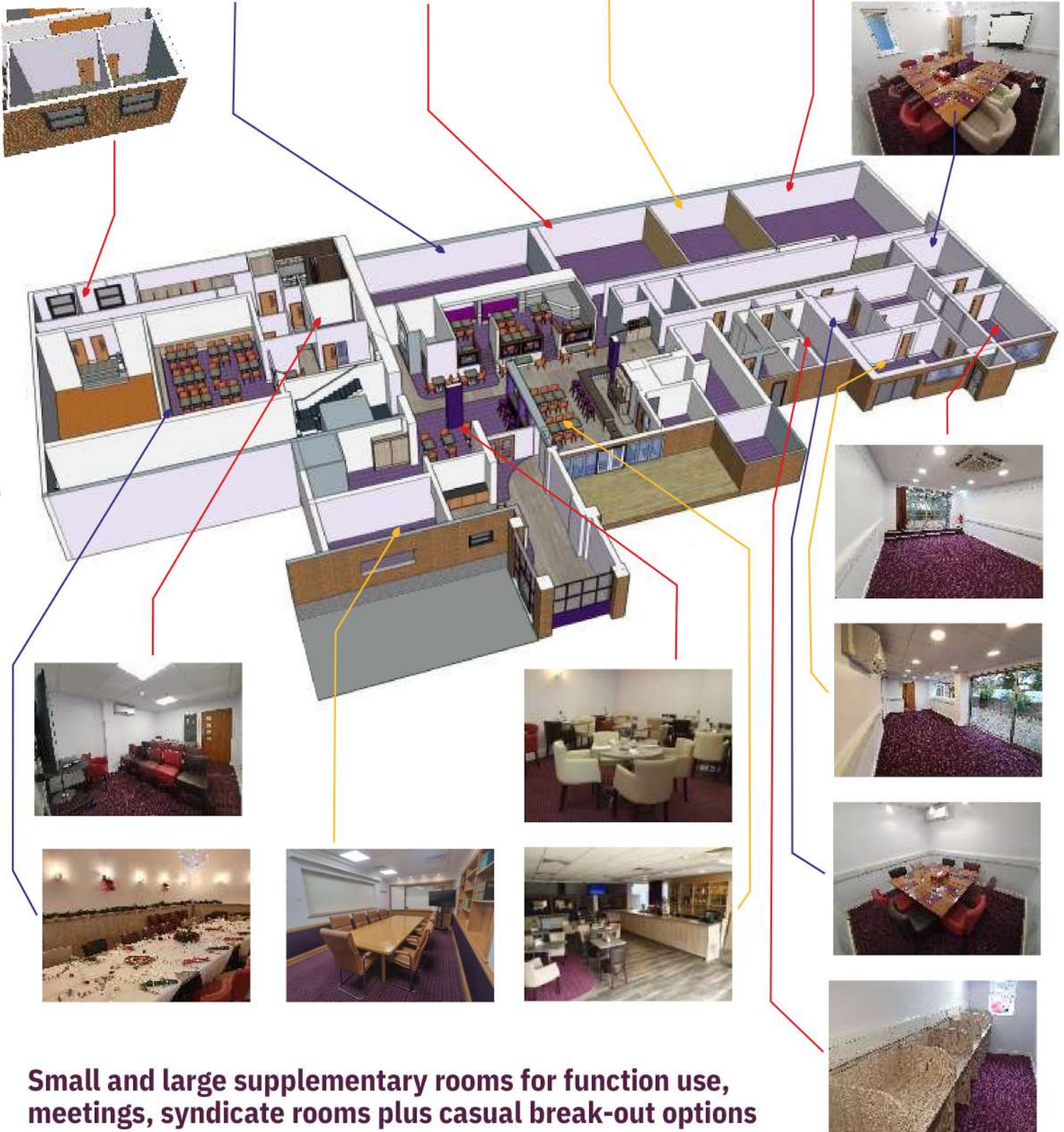
- ü From 2 to 250 delegates
- ü Rooms with built in flexibility - 12 sq m to 315 sq m
- ü Theatre style, (10 to 250 delegates), boardroom (2 to 40 delegates), u-shape (10-50 delegates), cabaret style, dinner & dance (15 to 220 delegates)
- ü A host of "break-out" areas
- ü Exhibition space of up to 300 sq m plus wall space and foyer display/check in areas
- ü Dedicated conference concierge
- ü Experience with expertise - every meeting meticulously planned and on- the-day organisational help as needed
- ü Business services including fax, printing, electronic information board, batch scan, email and PA services



Professional, Personal, Flexible



Flexible spaces, extensive choices



Small and large supplementary rooms for function use, meetings, syndicate rooms plus casual break-out options

To discuss your plans, call our conference coordinator on 01509 67 24 27
or e-mail us on conf@kegworthhotel.com

Delegate packages, menu & other options

Delegate Packages

Day Delegate Package

- Meeting room including:
- pads and pencils
- iced water and mints
- Flipchart with paper and pens
- Projector on a screen or large conference LCD monitor
- Free, unrestricted dedicated high speed internet and wifi
- Free onsite car parking
- 3 servings of hot refreshments
- Buffet lunch with 3 choices

24 Hour Delegate Package

- Includes all items on the day delegate package plus:
- Dinner in Sweet Olives Restaurant - two or three courses
- Superior bedroom with work space
- Full English or continental breakfast
- Complimentary use of our

Optional @ Arrival

- Sausage/bacon/egg/vegan rolls £4.50pp
- Fresh fruit bowls £2.25pp
- Danish pastries: £2.25 pp
- Full breakfast: £8.95

Optional @ Break

- Power break (energy drinks, energy bars, chocolate bars) £5pp
- Extra servings of tea/coffee £3.95
- Selection of miniature cakes £3
- Seasonal choice ice cream £3

Equipment extras (if not included)

- Additional flip chart & pens £15
- AV system with x 2 mic £75 - £200
- Laptop hire: £50 -£150

Lunch Choices

Open rolls - with a selection of fillings cheese and chutney, tuna and cucumber, egg mayo, falafel and humous, and house salad, plus, additional items of your choice from the list below.

- Mixed pizza
- Mini vegetable quiches
- Mediterranean mix (v.gf)
- Traditional sausage rolls
- Spicy chicken wings (gf)
- Fish goujons with lemon and cracked pepper mayonnaise
- Chicken goujons with a BBQ dip
- Potato wedges and dips (v.gf)
- Vegetable spring rolls (v.gf)
- Breaded torpedo king prawn
- Potato and walnut salad (v.gf)
- Pasta Salad (v.gf)
- Mini dessert selection
- Vegan Rolls (like sausage rolls)
- Vegan Chick'n stipes
- Vegan southern fried nuggets
- Vegan southern fired wings
- Vegan Sweet potato falafel bites (gf)
- Vegan Moroccan style cauli bites (gf)
- Apple, Walnut, cucumber, celery, parsley salad
- Pasta Salad non mayo version (v.gf,ve)
- Potato salad no mayo version (v.gf,ve)
- Vegetarian cheese and chive skins (v.gf,ve)

£10.95 for 3 items, £12.95 for 5 items,
£14.95 for 7 items, £16.95 for 9 items per person

Nottingham Conference Suites

Flexible Space for up to 250 seated delegates



To discuss your plans, call our conference coordinator on 01509 67 24 27
or e-mail us on conf@kegworthhotel.com

Nottingham Conference Suite - conference rooms, floorplan and delegate numbers



Room Delegate Capacity

Imagineering, Foresight, Innovation, Thinkference

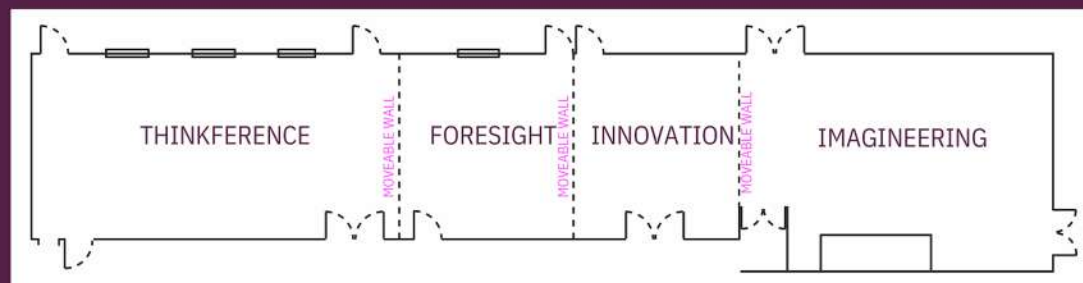
Room	Theatre	Classroom	Boardroom	U-Shape	Private Dining	Dinner Dance	Cabaret
Thinkference	100	60	40	40	80	-	56
Innovation	40	20	20	20	40	-	28
Foresight	40	20	20	20	40	-	28
Imagineering	120	60	40	50	80	-	56
Nottingham Suite	250	150	-	-	220	200	160
Thinktank Boardroom	-	-	10	-	-	-	-

The ceiling height of the conference rooms is 2.8m high and 2.4m low.

All conference rooms are located on a level floor. All rooms have air conditioning and natural daylight. The Thinkference, Innovation, Foresight and Imagineering suites combine to form the Nottingham Suite. Thinkference Suite has 3-phase power, vehicle access, a bar and dance floor. Imagineering suite has a dance floor. Additional syndicate rooms are available.

Floor Plans

Nottingham Conference Suites



Room Dimensions

Imagineering, Foresight, Innovation, Thinkference

Room	Length	Width	Door Access	Area (sq m)
Imagineering	15.25m	7.62m	1.35m	116 sq m
Foresight	6.7m	7.62m	0.79m	51 sq m
Innovation	6.7m	7.62m	1.57m	51 sq m
Thinkference	12.8m	8.84m	1.43m	113 sq m
Nottingham Suite	41.44m	7.62m	Max 1.57m	315 sq m
Executive Boardroom	6m	3.25m	0.79m	19.5 sq m

The ceiling height of the conference rooms is 2.8m high and 2.4m low.

Loughborough Conference Suite

Conference Rooms - Floorplan and Delegate Numbers

Prestige suites with built-in flexibility and own reception area.

Use for meetings, functions, private dining, exhibitions, product launches, medical screening, physiotherapy, lectures, examination hall and cinema screening. Studio with sprung floor for dance, physiotherapy, studio based teaching, exercise, yoga, pilates etc. and general relaxation space.



Loughborough Conference Suite Floorplan and delegate numbers



Floor Plans

Loughborough Conference Suite



Room Dimensions

Loughborough Conference Suite

Room	Length	Width	Door Access	Area (sq m)
Inspiration Suite	9.70m	6.34m	1.50m	61.5 sq m
Light Bulb	4.4m	3.00m	0.79m	13.2 sq m
Invigorate	3.0m	3.60m	0.79m	10.8 sq m
Re-new	2.67m	3.00m	0.79m	8.00 sq m
Energise / Gym Suite	9.70m	6.70m	3.00m	65.0 sq m
Energise Studio space	6.3m	6.70m	3.00m	42.5 sq m

The ceiling height of Inspiration is 3.5m high and 2.8m low.

Room Delegate Capacity

Loughborough Conference Suite

Room	Theatre	Classroom	Boardroom	U-Shape	Private Dining	Dinner Dance	Cabaret
Inspiration	70	30	30	40	48	30	36
Light Bulb	12	-	8	-	10	-	6
Invigorate	12	-	8	-	8	-	-
Renew	-	-	6	-	6	-	-



East Midlands Business Centre

Prestige and flexible business space for short, medium and long term occupancy at a great central location

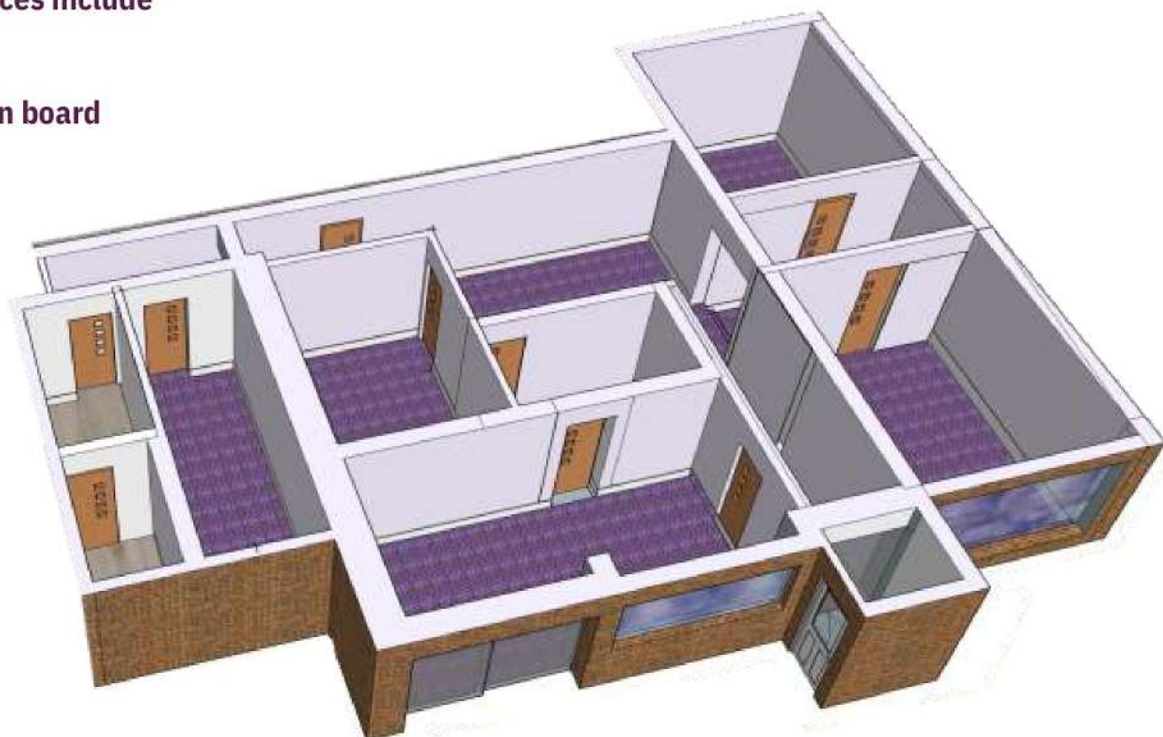
Whether you are starting a new venture, fed up of working from home or want to set up a UK base, you can cross off worrying about a prestige, yet flexible and cost effective place to work from. The East Midlands Business Centre is a dedicated executive office space set within Kegworth Hotel. Along with executive offices on flexible occupancy contracts you have you have the convenience, location and prestige of a quality hotel included!

At A Glance

- **Furnished and serviced offices and executive suites modern, tasteful and prestige**
- **Superb central location just off M1 junction 24, minutes from East Midlands International Airport, Nottingham, Loughborough, Derby and Leicester**
- **Meet & greet facilities and extensive hotel lounge spaces as well as conference and meeting rooms**
- **Hotel accommodation on site. "Office + Stayover" contracts**
- **Flexible quick in - quick out contracts at competitive terms**
- **Ample free parking**
- **Free internet, flexible comms and individual phone lines are available**
- **Dedicated kitchenette, reception area and coffee lounge**
- **Heating/air conditioning**
- **Networking opportunities**
- **Full service hotel facilities at discounted prices including restaurant**

Additional business services include

- **Fax & Scanning**
- **Printing services**
- **Electronic information board**
- **PA services**
- **Web hosting**



East Midlands Business Centre

Individual Room sizes and amenities

All rooms have wireless internet and flexibility built in for wired communication. There is a dedicated reception/lounge area and choice of complementary beverage including fresh ground coffee. Also included within the service is a dedicated kitchenette and daily cleaning.



StrategyHub

- large patio window air conditioned
- 19 sq m [3.9 x 4.9m]
- 4 large desks
- Meeting room for 12



ReCreate

- full length window air conditioned
- 20 sqm [6.5 x 3m]
- 5 large desks
- Meeting room for 16



FutureSmart

- Interior
- Air conditioned
- 12.3 sq m [4 x 2.9m]
- 2 large desks
- Meeting room for 8



RightTime RightPlace

- Window (small)
- Air conditioned
- 16 sq m [3.9 x 4.2m]
- 4 large desks
- Meeting room for 9



ReConnect

- Interior
- Air conditioned
- 5.5 sq m [1.8 x 3.2m]
- 1 large desks
- Meeting room for 3



SmartBox

- Small window
- 9 sq m [5.8 x 1.5m]
- 5 Trade/work stations
- wall monitors (optional)



Nearby Places

- East Midlands Airport: 3 miles
- East Midlands Parkway Rail Station: 3 miles
- Birmingham Airport: 40 miles
- Donington Race Track: 5 miles
- Derby Pride Park: 10 miles
- Nottingham: 11 miles
- Leicester: 17 miles
- Loughborough: 7 miles
- Long Eaton: 7 miles
- Motorway M1, J24: ½ mile
- Bonington Campus, Univ of Nottingham: 2 miles

DIRECTIONS: from Junction 24, Motorway M1, take A6 heading towards Loughborough. Within half mile, at traffic lights take right onto Packington Hill. In about 50 yards turn left into the car park for Kegworth Hotel. From Nottingham City Centre (15 mins to hotel) take A453 dual carriageway heading to M1, J24.



For a no obligation consultation ..

call 01509 67 24 27 or e-mail: conf@kegworthhotel.com